



Next Gen Summit

# CAREER PANEL: DESIGNING A RESILIENT FUTURE



Next Gen Summit

## CAREER PANEL



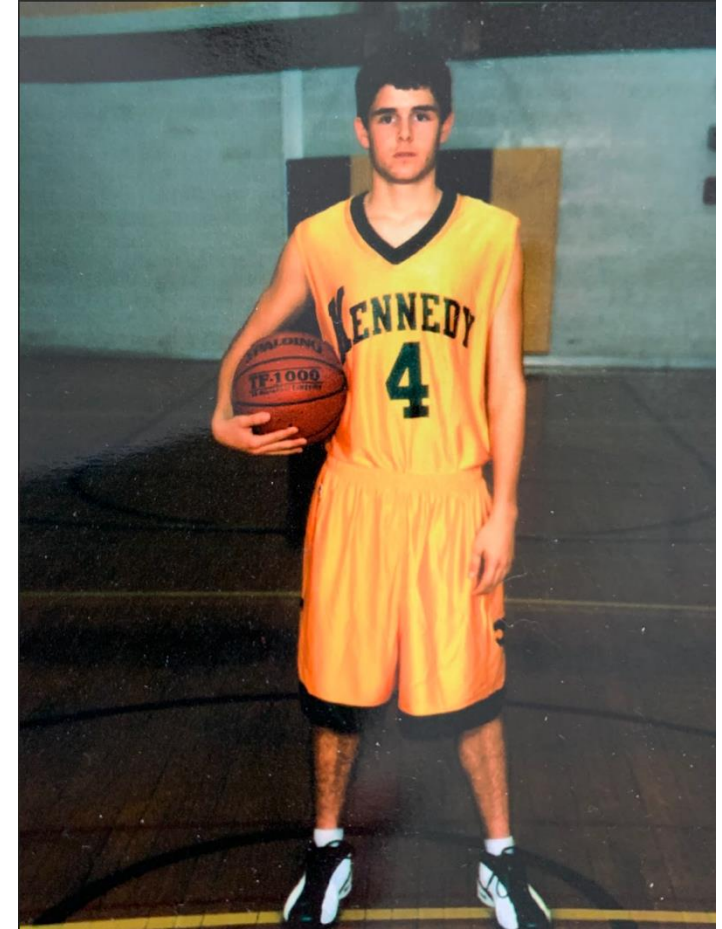
**Tom Klein**

*Director*

Center for Urban & Community Design

**University of Miami**

# WHAT IS YOUR WHY?





# WHAT IS YOUR WHY?

HIGH WATER OVERTAKES DOWNTOWN CEDAR RAPIDS  
THOUSANDS EVACUATED IN UNPRECEDENTED FLOOD  
POWER LOSS WIDESPREAD; WATER IN SHORT SUPPLY



WIL. L28 NO. 136

## The Gazette

AN INDEPENDENT NEWSPAPER IN IOWA'S TECHNOLOGY CORRIDOR

FRIDAY  
June 13, 2008  
www.gazetteonline.com

75 CENTS

# EPIC SURGE



MORE FLOODING COVERAGE AT  
[WWW.GAZETTEONLINE.COM](http://WWW.GAZETTEONLINE.COM)

- GET THE LATEST ON FLOODING IN LINN COUNTY, JOHNSON COUNTY AND EAST IOWA
- VIEW PHOTO GALLERIES OF RESCUES, EVACUATIONS AND DEVASTATION
- SEE AERIAL VIDEO TAKEN FROM A HOTEL IN DOWNTOWN CEDAR RAPIDS
- WATCH VIDEO OF RESIDENTS BEING RESCUED BY BOAT IN THE TIME CHECK AREA

The swollen Cedar River continues to rise Thursday afternoon on its way to an unprecedented crest today, overtopping city bridges, pouring into downtown and marooning May's Island (right). The island is home to the Linn County Jail (background), Linn County Courthouse (middle) and Cedar Rapids City Hall (foreground).

SEE NEWS, HAVE NEWS? CEDAR RAPIDS (515) 255-2222 IOWA CITY (515) 255-2111 IOWA (515) 255-2111

GRAPHS TO		Index		Index		Index		Index		Index		Index		Index	
State	City	State	City	State	City	State	City	State	City	State	City	State	City	State	City
100	100	100	100	100	100	100	100	100	100	100	100	100	100	100	100

TODAY'S WEATHER: Partly to mostly cloudy

Next Gen Summit

# WHAT IS YOUR WHY?



Live Music  
Performing Arts



Landscape Architecture  
Resilience



Cities



Mobility Planning  
Urban Design



Policy  
Advocacy



Next Gen Summit

# Gowanus Canal

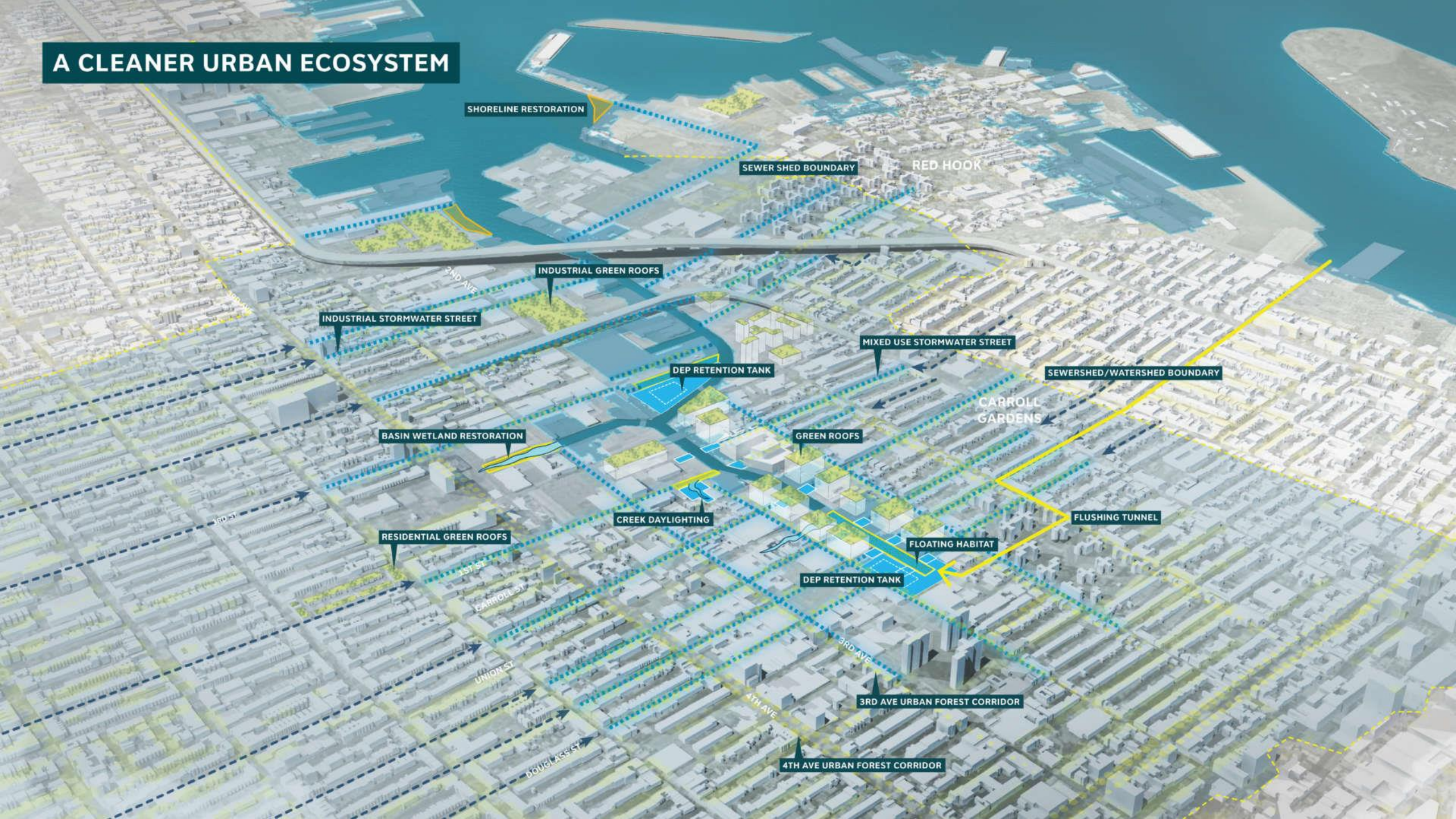
Brooklyn, New York

SCAPE





# A CLEANER URBAN ECOSYSTEM



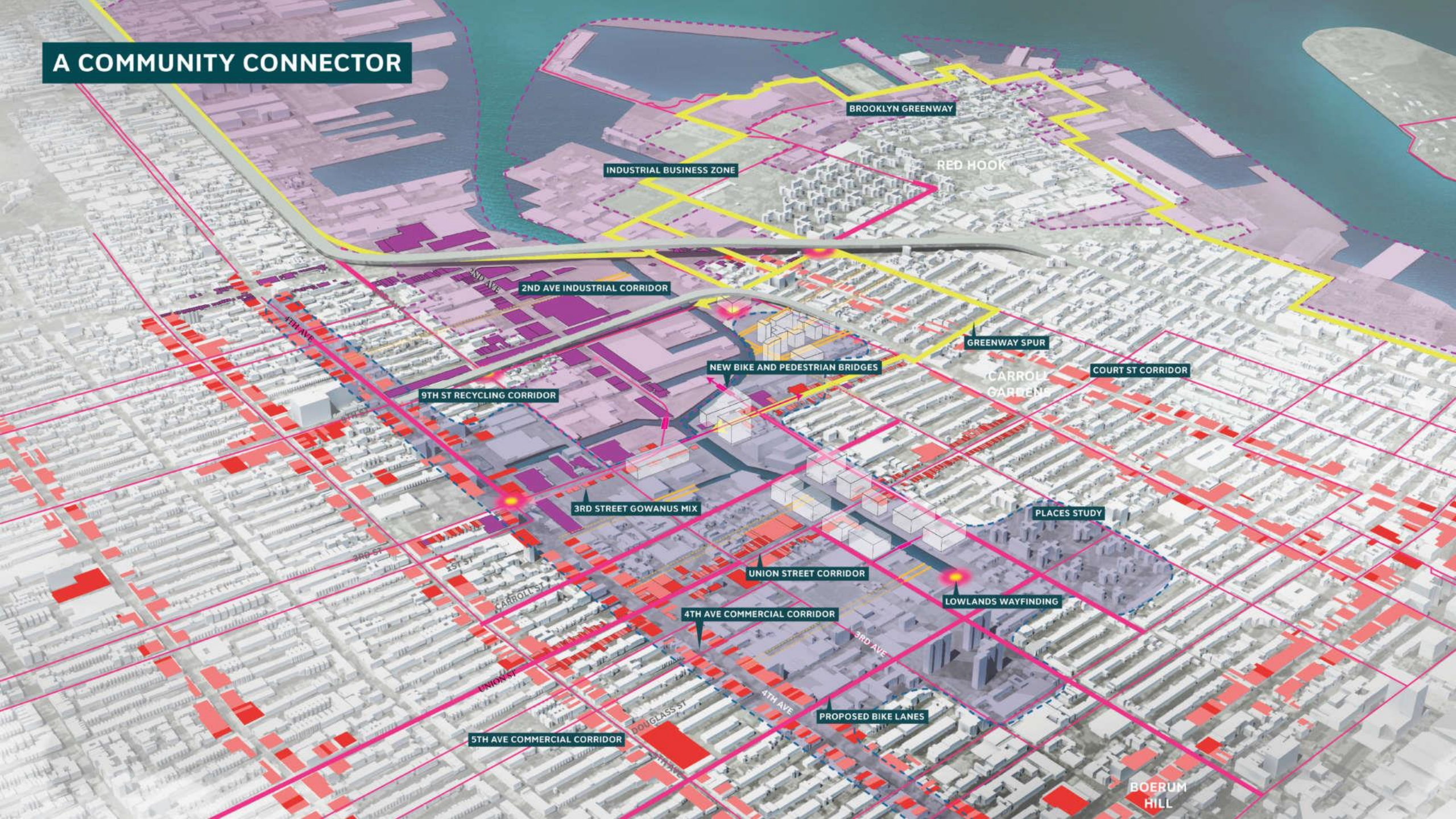


# A NETWORK OF PARKS



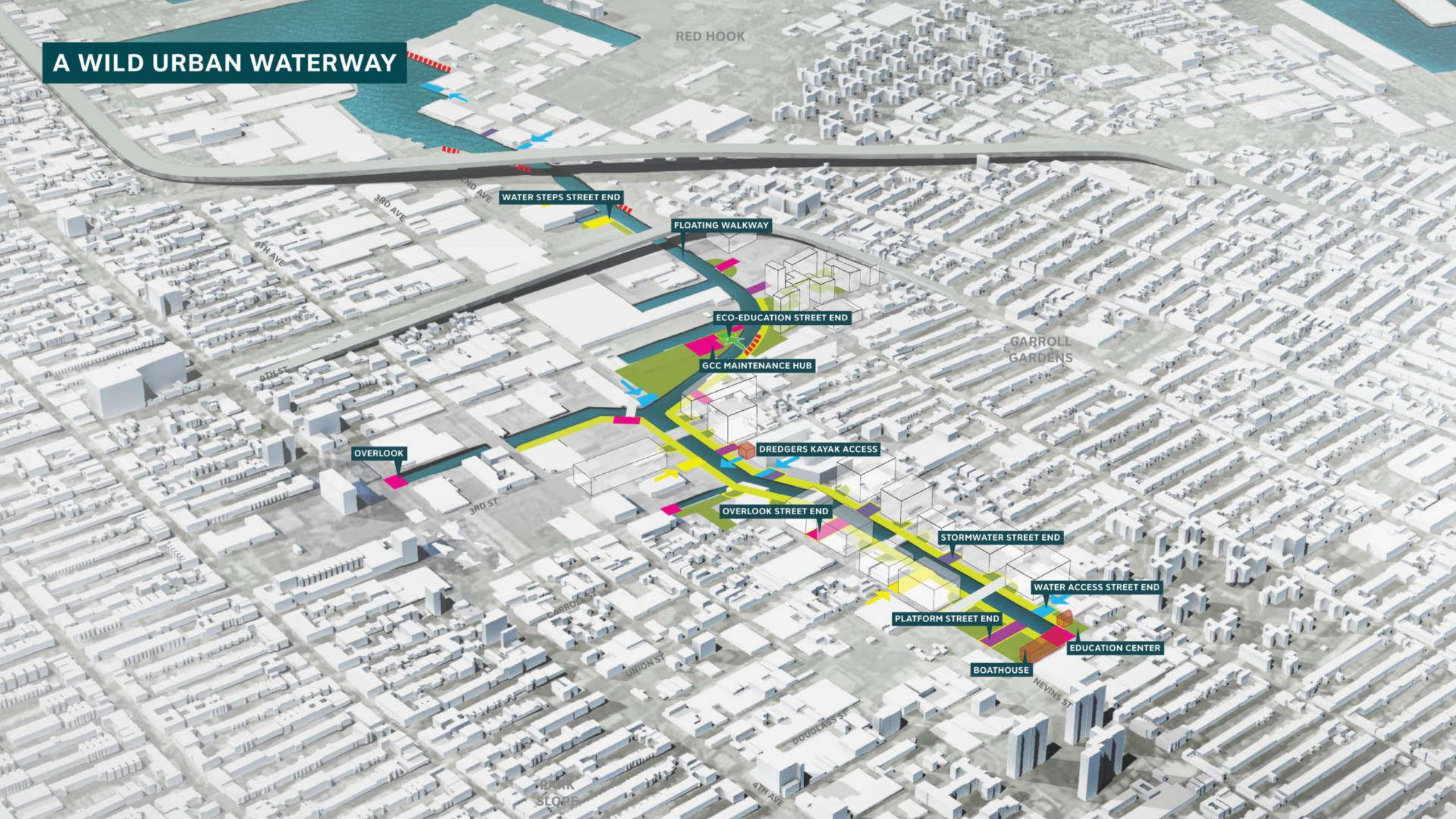


# A COMMUNITY CONNECTOR





# A WILD URBAN WATERWAY



RED HOOK

WATER STEPS STREET END

FLOATING WALKWAY

ECO-EDUCATION STREET END

GCC MAINTENANCE HUB

DREDGERS KAYAK ACCESS

OVERLOOK STREET END

STORMWATER STREET END

WATER ACCESS STREET END

PLATFORM STREET END

EDUCATION CENTER

BOATHOUSE

GARROLL GARDENS

RED HOOK

WATER STEPS STREET END

FLOATING WALKWAY

ECO-EDUCATION STREET END

GCC MAINTENANCE HUB

DREDGERS KAYAK ACCESS

OVERLOOK STREET END

STORMWATER STREET END

WATER ACCESS STREET END

PLATFORM STREET END

EDUCATION CENTER

BOATHOUSE

GARROLL GARDENS



DRAFT 2019

# GOWANUS LOWLANDS

MASTER PLAN

Gowanus Canal  
  
CONSERVANCY

SCAPE / LANDSCAPE  
ARCHITECTURE DPC







[Home](#) / [Article XIII](#) / [Chapter 9](#) / 139-50

**139-50**

## GOWANUS CANAL WATERFRONT ACCESS PLAN

LAST AMENDED 11/23/2021

[HISTORY](#)



The provisions of Article VI, Chapter 2 (Special Regulations Applying in the Waterfront Area), shall apply, except as superseded, supplemented or modified by the provisions of this Section, inclusive.

The boundaries of the area comprising the Gowanus Canal Waterfront Access Plan, and the location of certain features mandated or permitted by the Plan, are shown on the maps in Appendix B of this Chapter.

The waterfront access plan has been divided into Parcels as shown on Map 1 of Appendix B of this Chapter, consisting of tax *blocks* and lots existing on September 22, 2021, as follows:

Parcel 1: Block 417, Lots 1, 10, 14, 21

Parcel 2: Block 424, Lots 1, 20

Parcel 3: Block 431, Lots 1, 2, 5, 6, 7, 12, 17, 43

Parcel 4: Block 425, Lot 1

Block 432, Lots 15, 25, 7501

Parcel 5: Block 439, Lot 1

Parcel 6a: Block 438, Lot 7

### Article I

General Provisions

### Article II

Residence District Regulations

### Article III

Commercial District Regulations

### Article IV

Manufacturing District Regulations

### Article V

Non-Conforming Uses and Non-Complying Buildings

### Article VI

Special Regulations Applicable to Certain Areas

### Article VII

Administration

### Article VIII



# The Gowanus Canal: Booming Test Bed for Climate-Change Adaptation

by James S. Russell, FAIA Emeritus

GOWANUS

## Developers share their vision of what a rezoned Gowanus could look like

New renderings from SCAPE show tall buildings, an active waterfront, and a canal filled with kayakers

JUNE 08, 2021, 10:30AM DIANE PHAM [↓ 3 COMMENTS](#)

AIR QUALITY

## OPINION: Progressives Should Support the Gowanus Rezoning

**AW** By Annie Weinstock

12:01 AM EDT on June 25, 2021



## Gowanus Canal Could Be New Model for Waterfront Planning

Avoiding the typical riverwalk.

JEN KINNEY JUNE 29, 2017

[SHARE](#)

## The Architect's Newspaper

SUBJECTS ▾ REGIONS ▾ | DIGITAL ISSUES AN INTERIOR | AWARDS | JOBS CALENDAR PRODUCTS CE STRONG EVENTS ▾

Smell Test

## Gowanus is one of New York City's most ambitious redevelopment projects—and its most fraught

By Ray Hu • August 1, 2025 • Architecture, Development, East, News

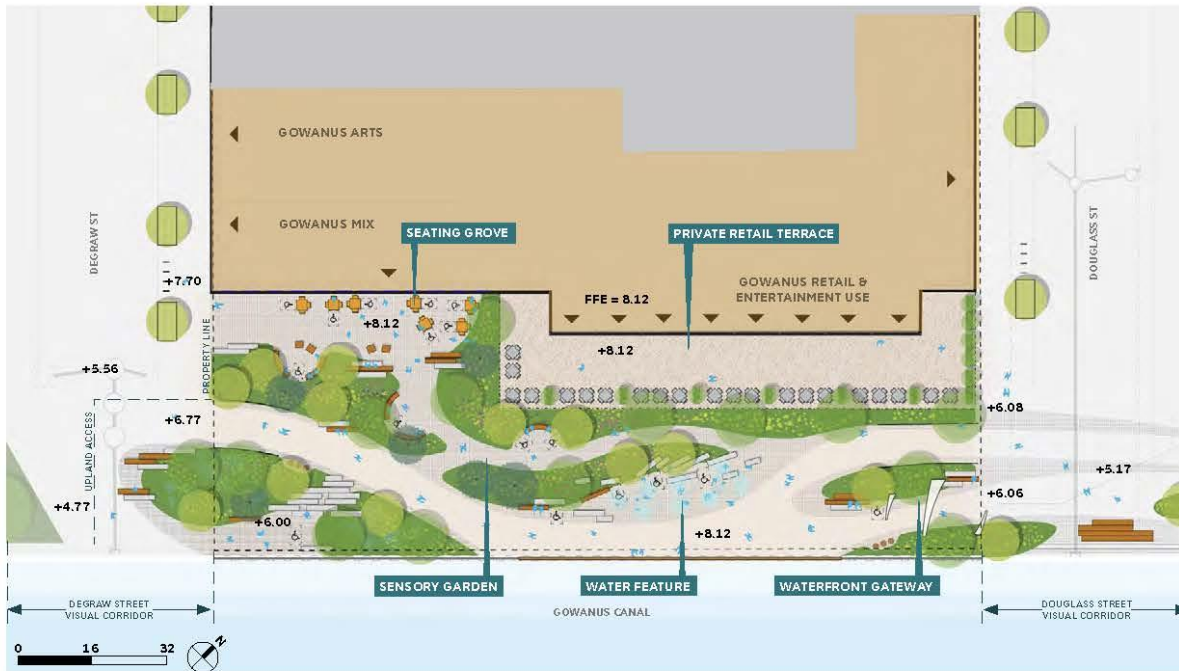
## The New York Times

### Can a Spate of New Builds Finally Revitalize Gowanus?

As cleanup continues in the notoriously polluted Gowanus Canal, amenity-filled developments are drawing new residents to the neighborhood. Is that a good thing?







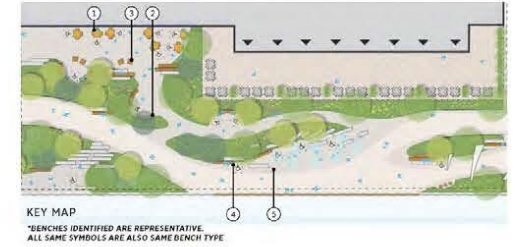
#### A Novel Approach:

The developer of each parcel is responsible for developing their segment of the new waterfront park. Zoning requirements enable consistency across sites, enabling each site to be both unique and part of the larger system. The creation of the first PID (Parks Improvement District) to be managed by the Gowanus Canal Conservancy enables consistent planting and maintenance across the entire district.



**Inclusive Program:** With oversight from both the Department of City Planning (DCP) and SCAPE, sites owned and built by different developers compliment each other programmatically. While each site may only include one or two active programmatic elements, the system of parks is able to support a diversity of uses that better represent the whole community.





1. BISTRO TABLE & CHAIRS (ADA)



2. STREETLIFE CURVED BENCH



3. STREETLIFE CUBE BENCH



4. BUNDLED WOOD BENCH



5. STONE BENCH



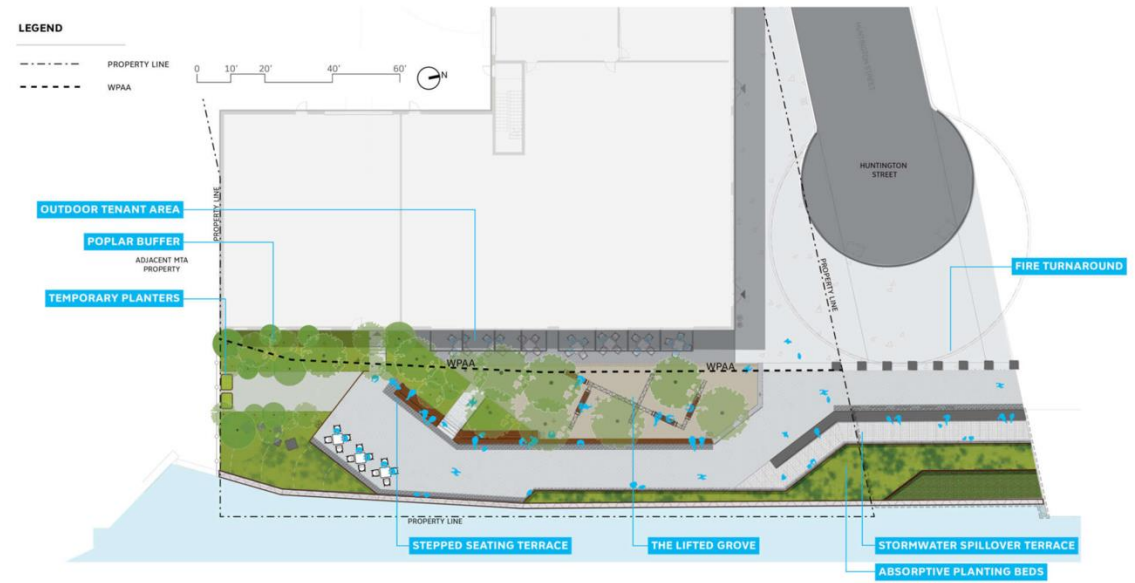
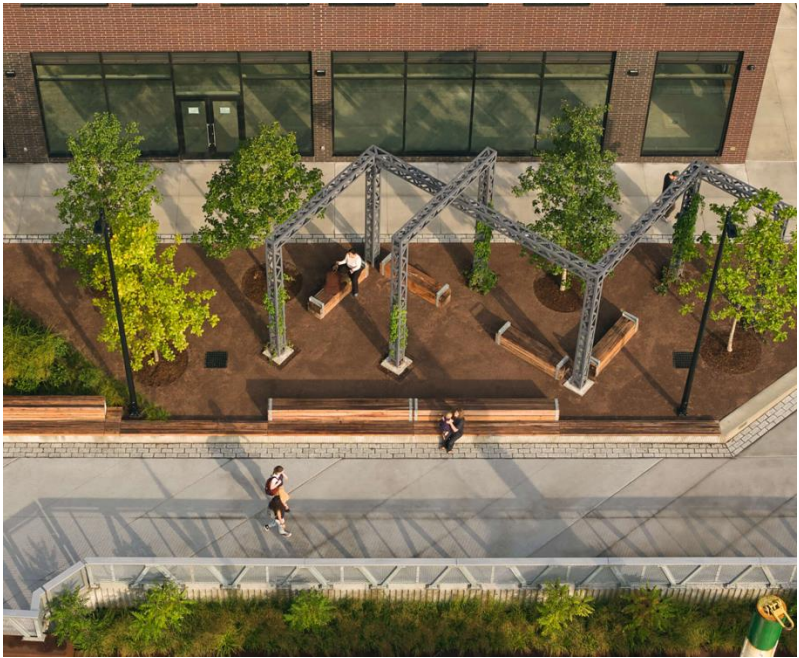
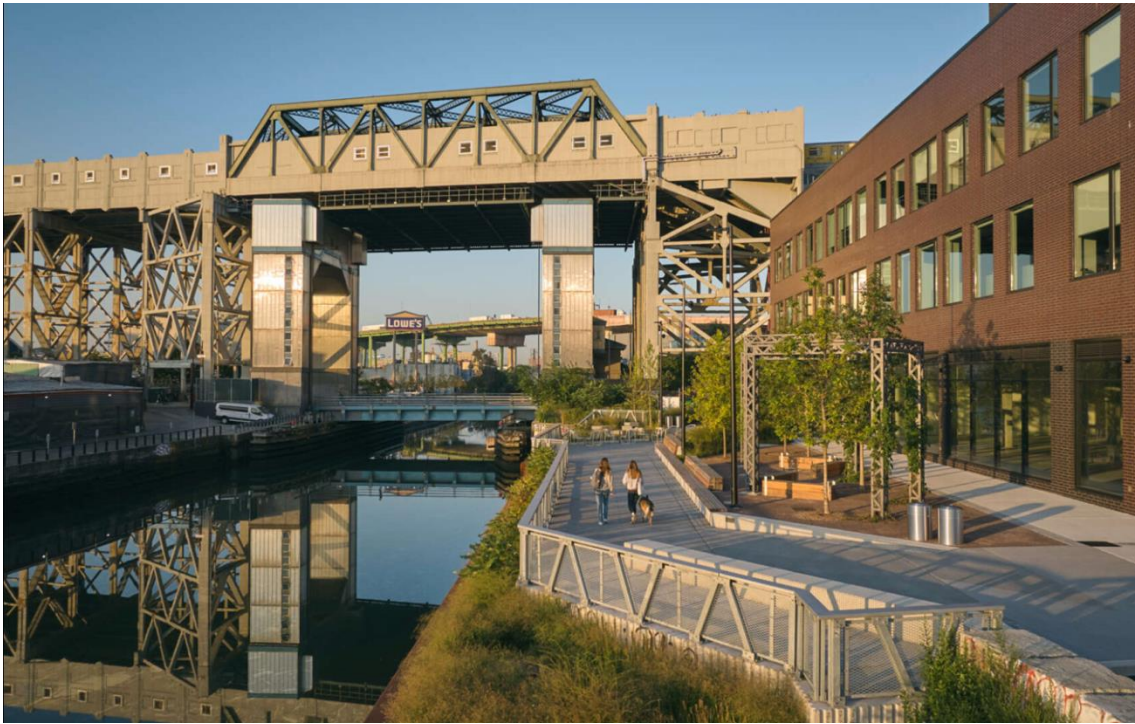
#### Understanding the Details:

As part of the approval process, The New York City Department of Parks & Recreation requests information about specific site elements. To help facilitate this process, we produced a series of diagrams depicting the types of amenities being proposed within the site.











Next Gen Summit

# The Point of the Mountain

Draper, Utah

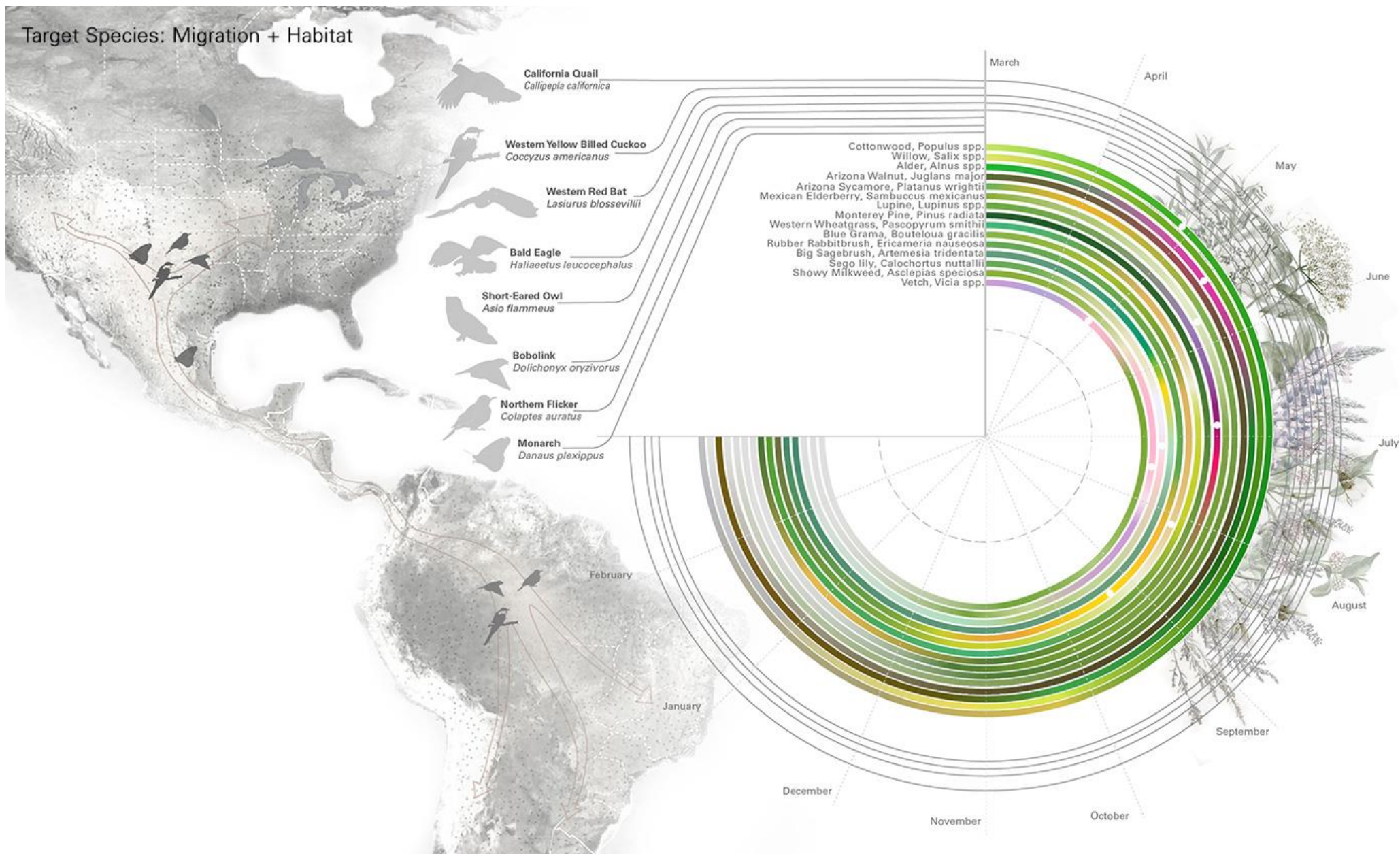
SOM + Design Workshop



Image Credit: SOM / Point of the Mountain State Land Authority



# Target Species: Migration + Habitat

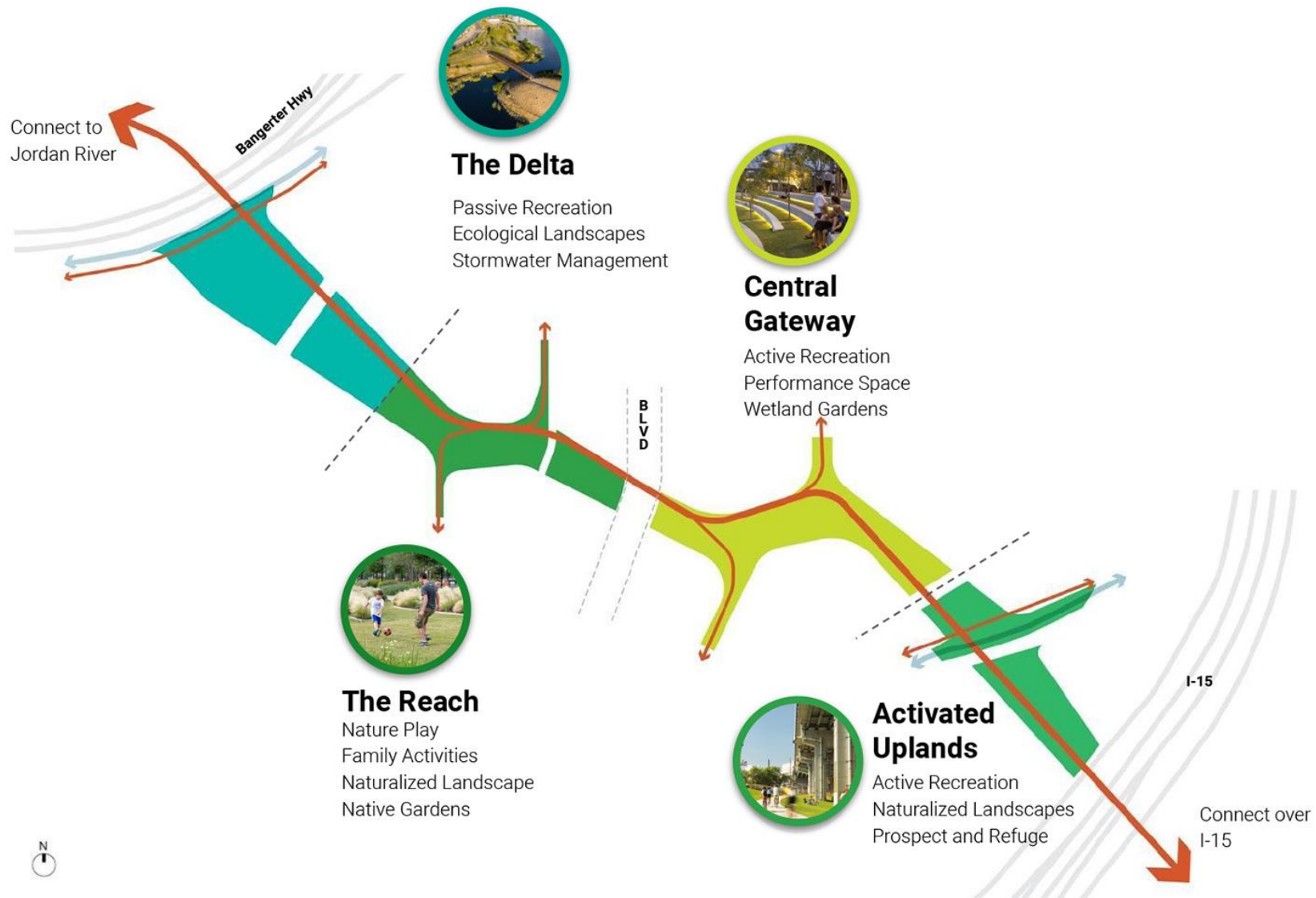




# Target Species: Regional Habitat













01-15-2022 | FAST GOVERNMENT

# They're building a 15-minute city from scratch in the Utah desert

“One of our goals is to create what we’ve termed a one-car community.”

[SHARE](#)